

Supplement of Atmos. Chem. Phys., 20, 12063–12091, 2020
<https://doi.org/10.5194/acp-20-12063-2020-supplement>
© Author(s) 2020. This work is distributed under
the Creative Commons Attribution 4.0 License.



Supplement of

The regional European atmospheric transport inversion comparison, EUROCOM: first results on European-wide terrestrial carbon fluxes for the period 2006–2015

Guillaume Monteil et al.

Correspondence to: Guillaume Monteil (guillaume.monteil@nateko.lu.se)

The copyright of individual parts of the supplement might differ from the CC BY 4.0 License.

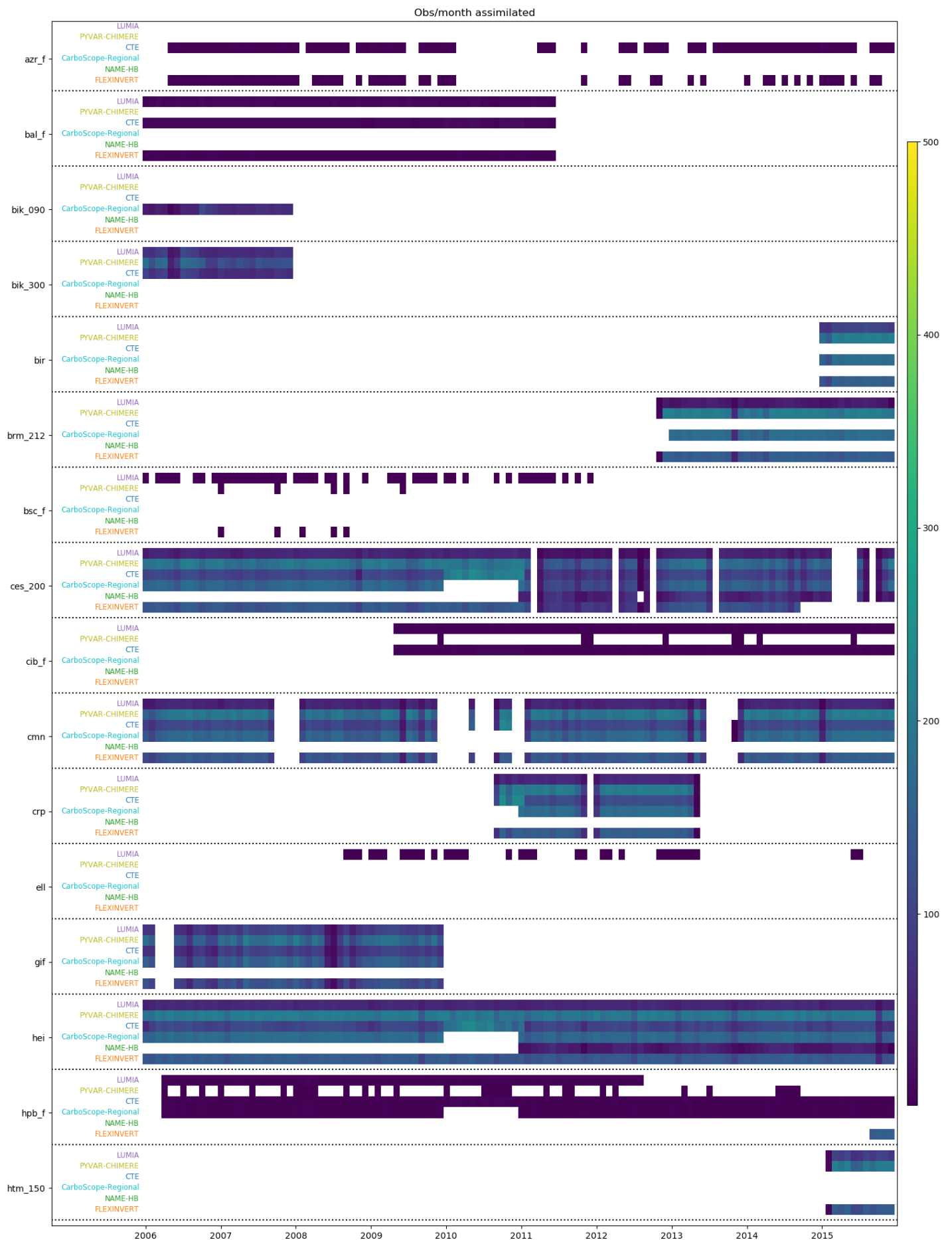


Figure S1: Number of observations assimilated every month, at each site, by the inversions (1/3)

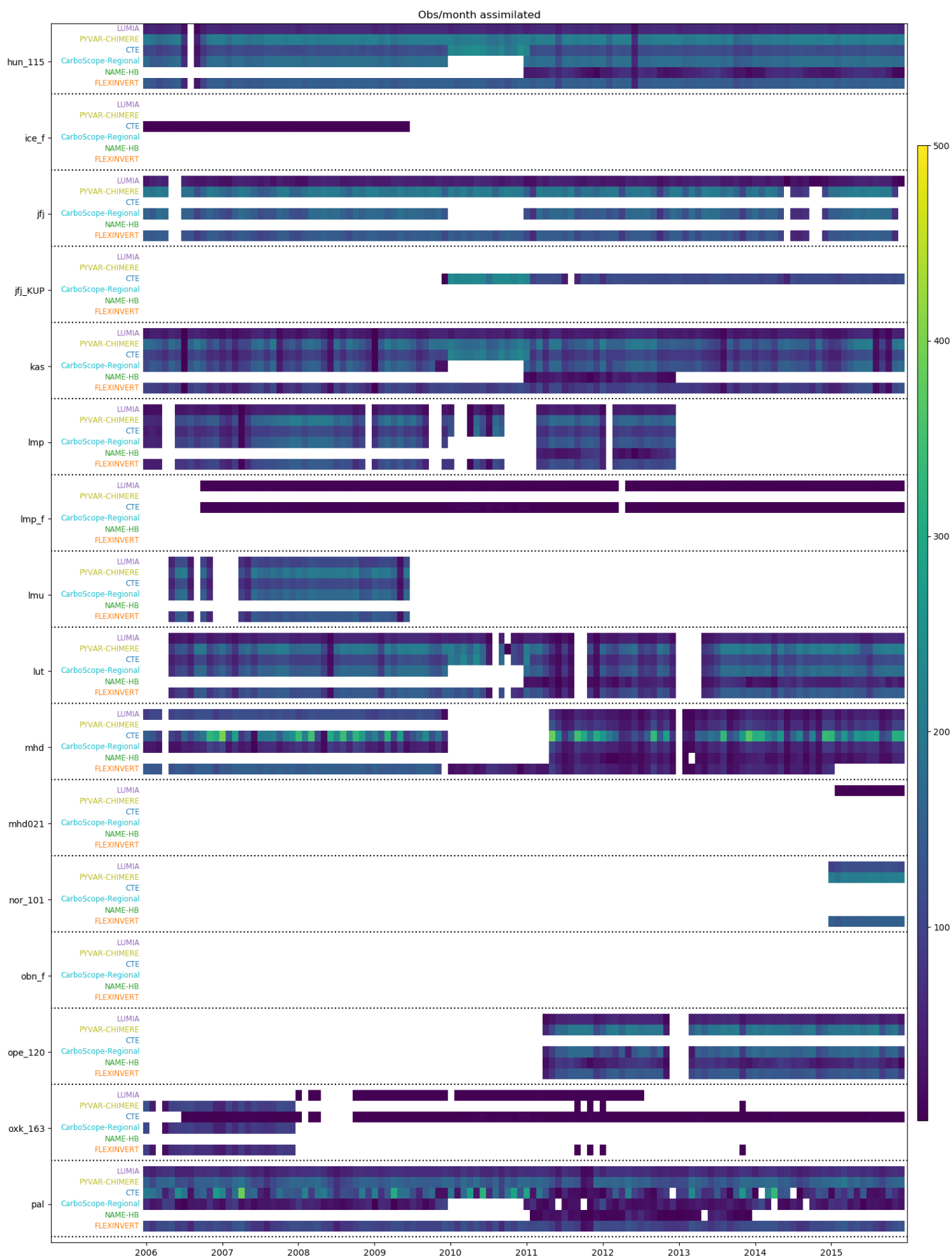


Figure S1: Number of observations assimilated every month, at each site, by the inversions (2/3)

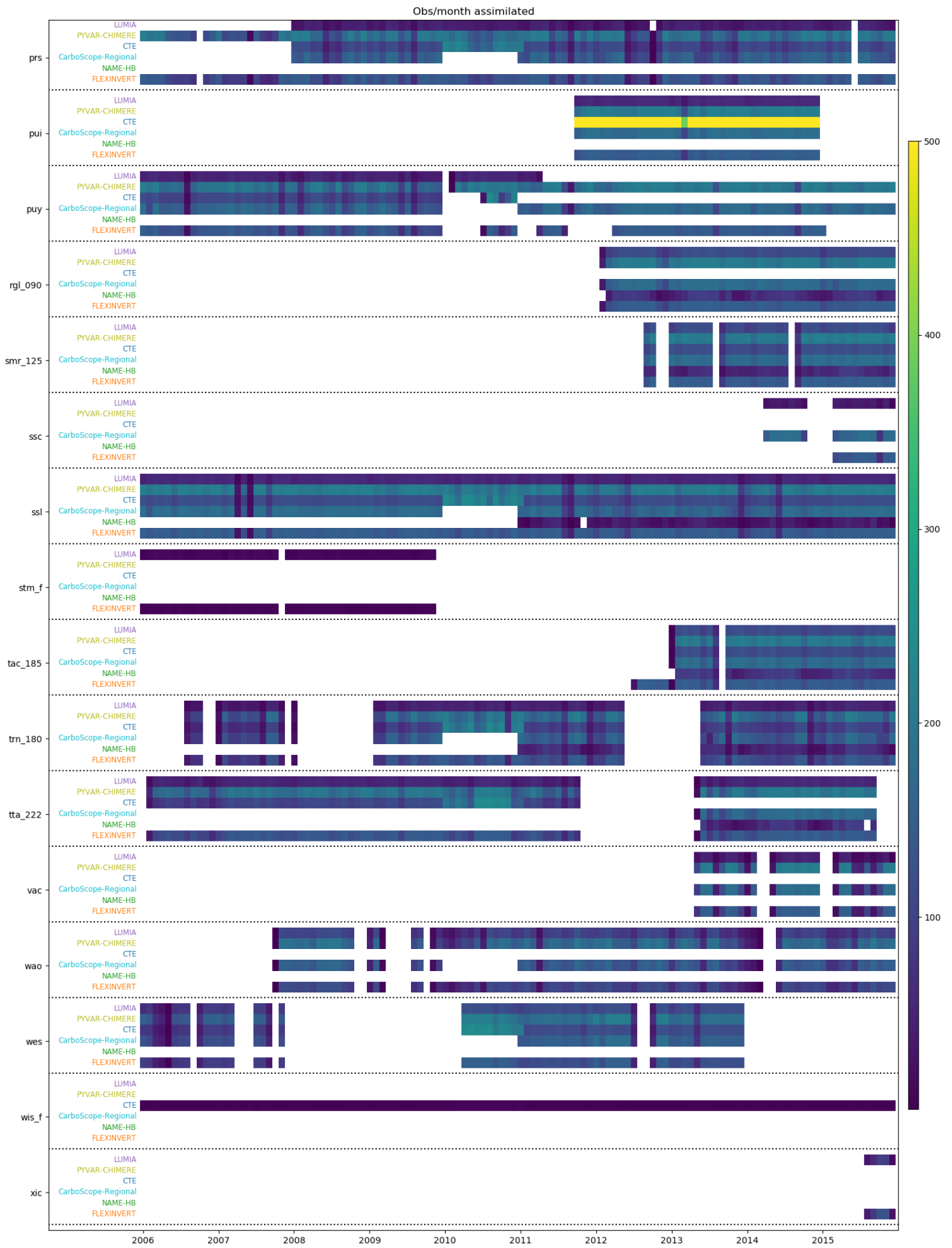


Figure S1: Number of observations assimilated every month, at each site, by the inversions (3/3)

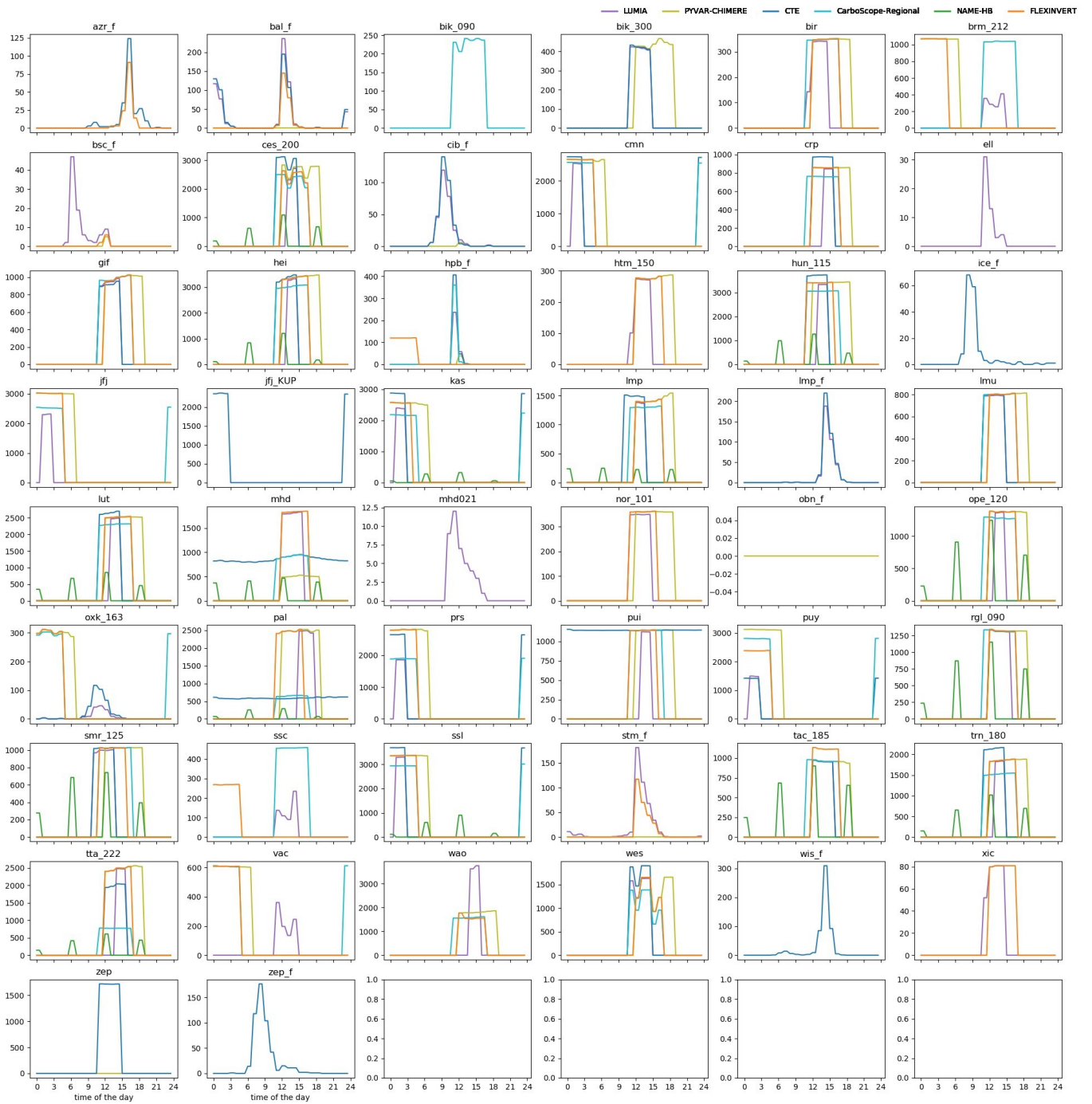


Figure S2: Number of observations assimilated by each inversion at each site and each hour of the day.

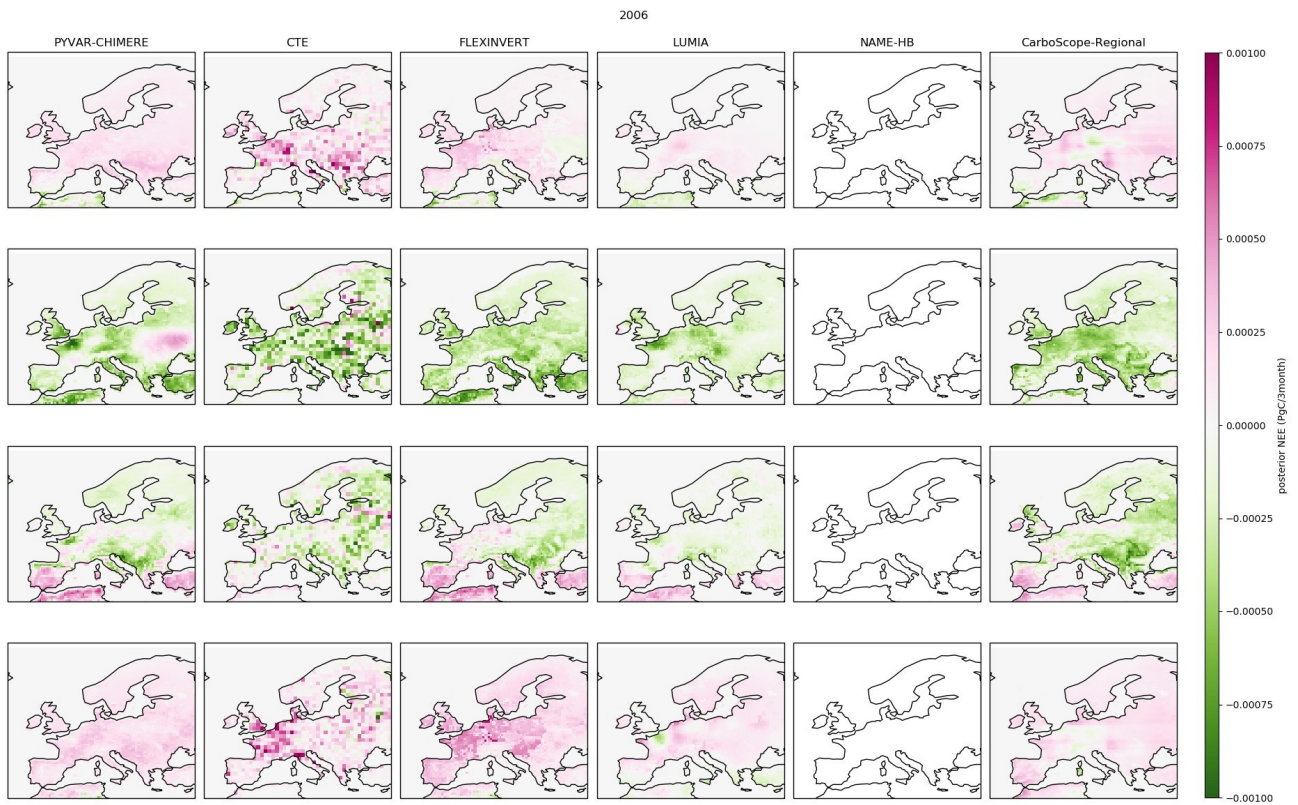


Figure S3: Posterior flux maps for the six inversions, in 3-monthly intervals (2006)

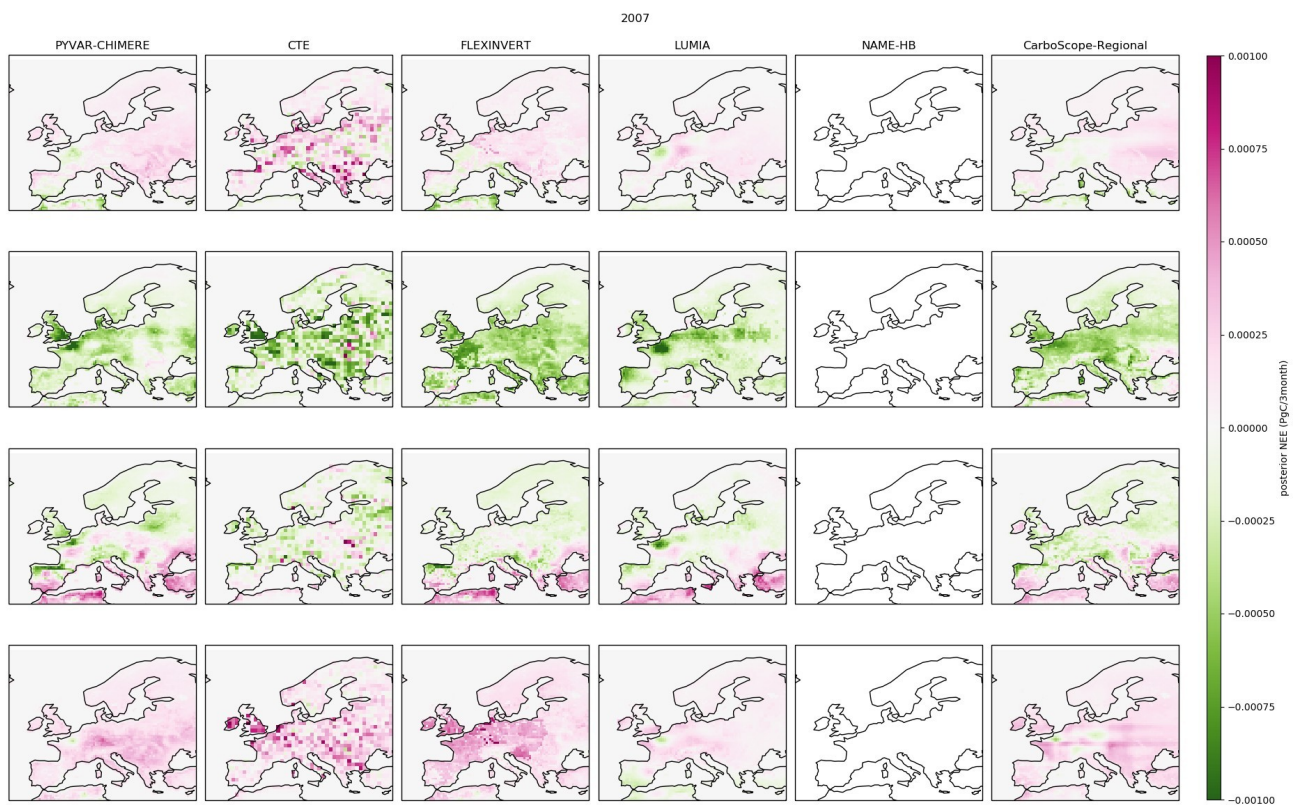


Figure S3: Posterior flux maps for the six inversions, in 3-monthly intervals (2007)

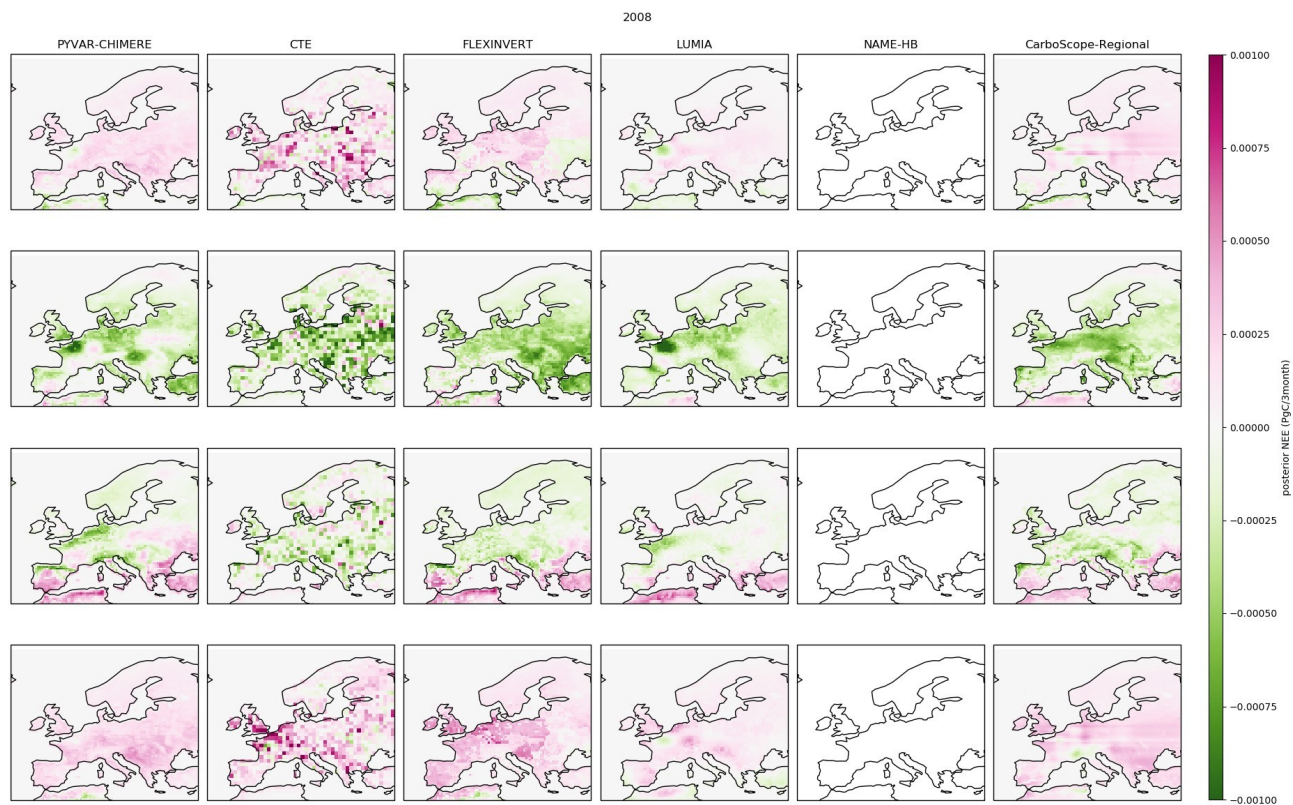


Figure S3: Posterior flux maps for the six inversions, in 3-monthly intervals (2008)

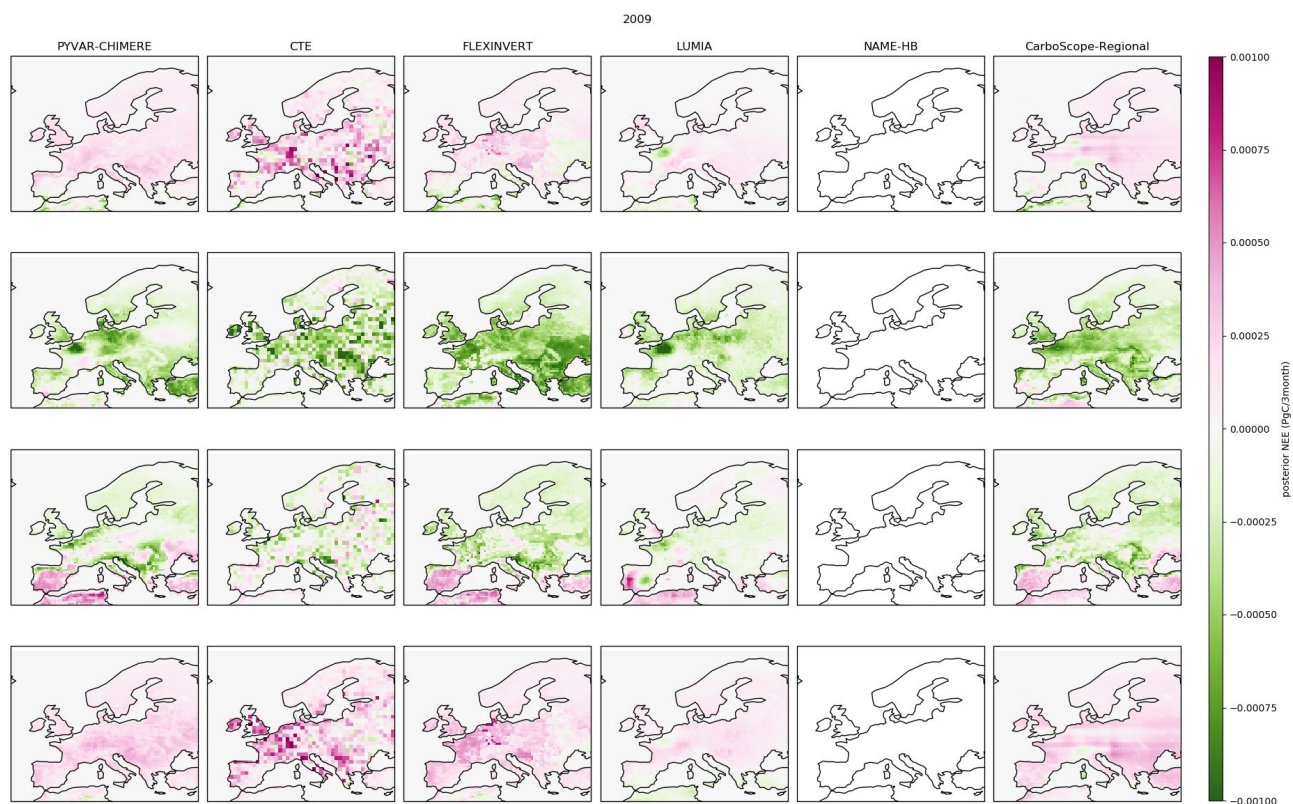


Figure S3: Figure S13: Posterior flux maps for the six inversions, in 3-monthly intervals (2009)

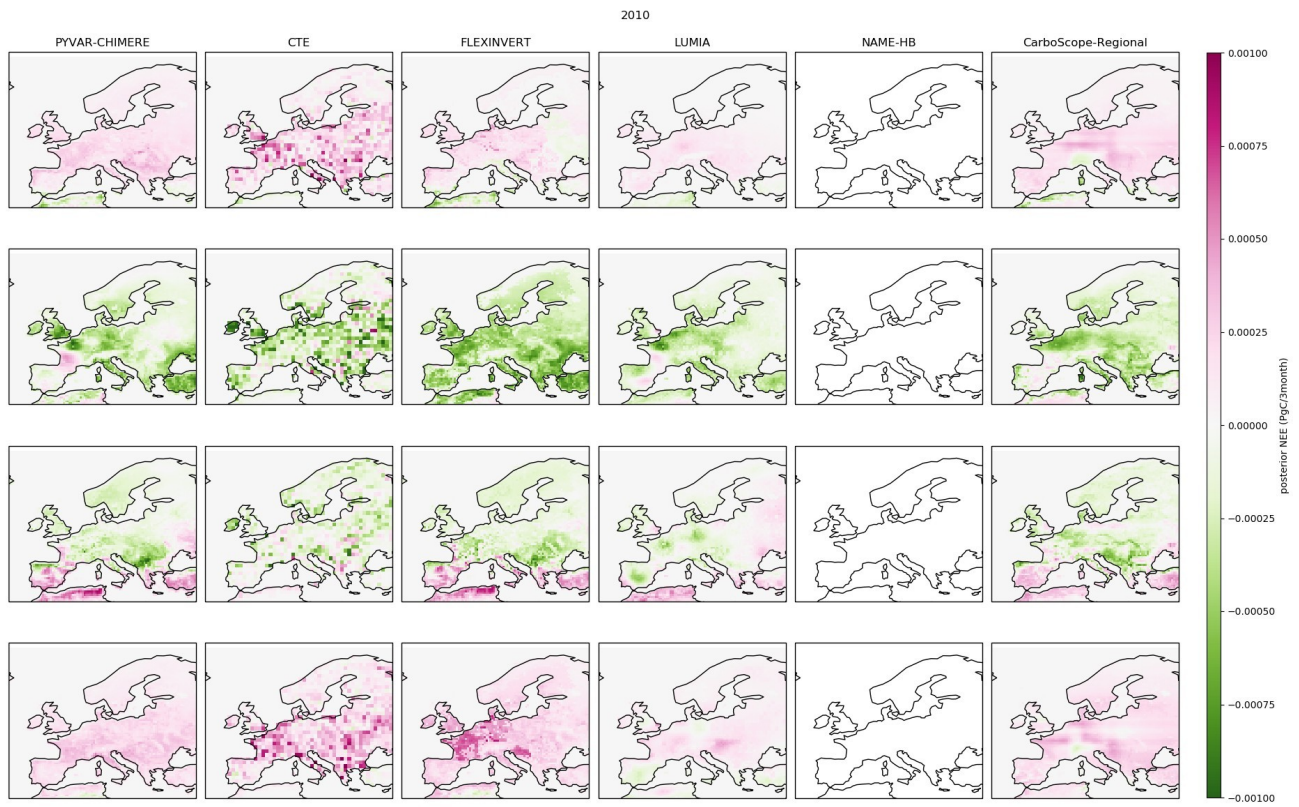


Figure S3: Posterior flux maps for the six inversions, in 3-monthly intervals (2010)

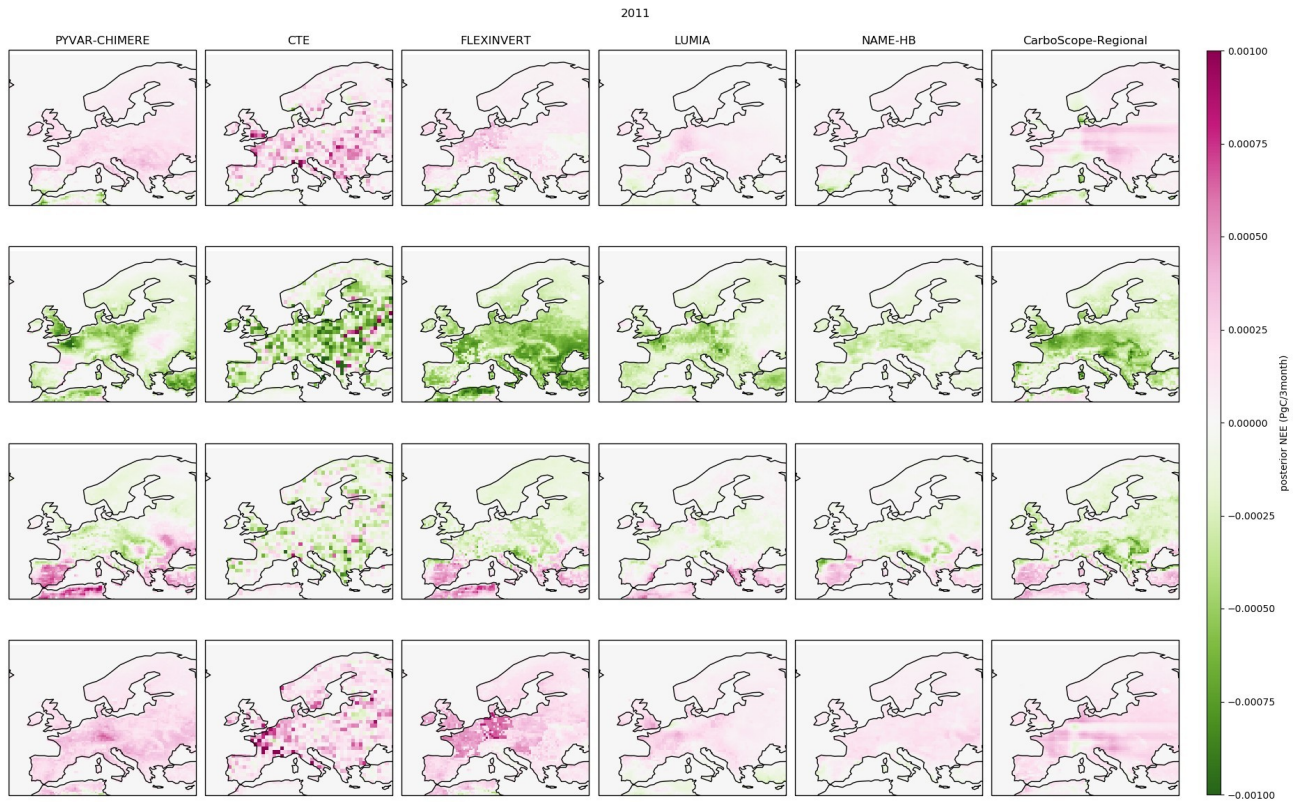


Figure S3: Posterior flux maps for the six inversions, in 3-monthly intervals (2011)

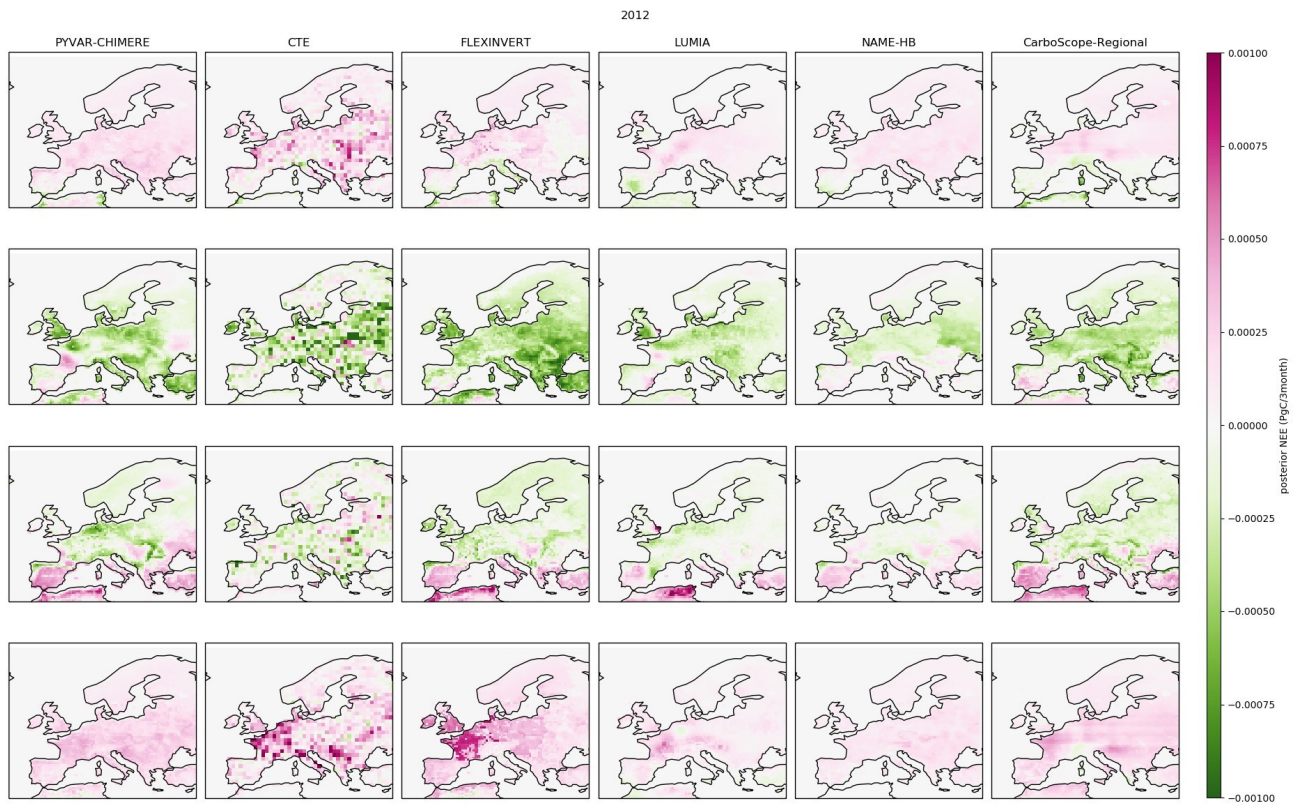


Figure S3: Posterior flux maps for the six inversions, in 3-monthly intervals (2012)

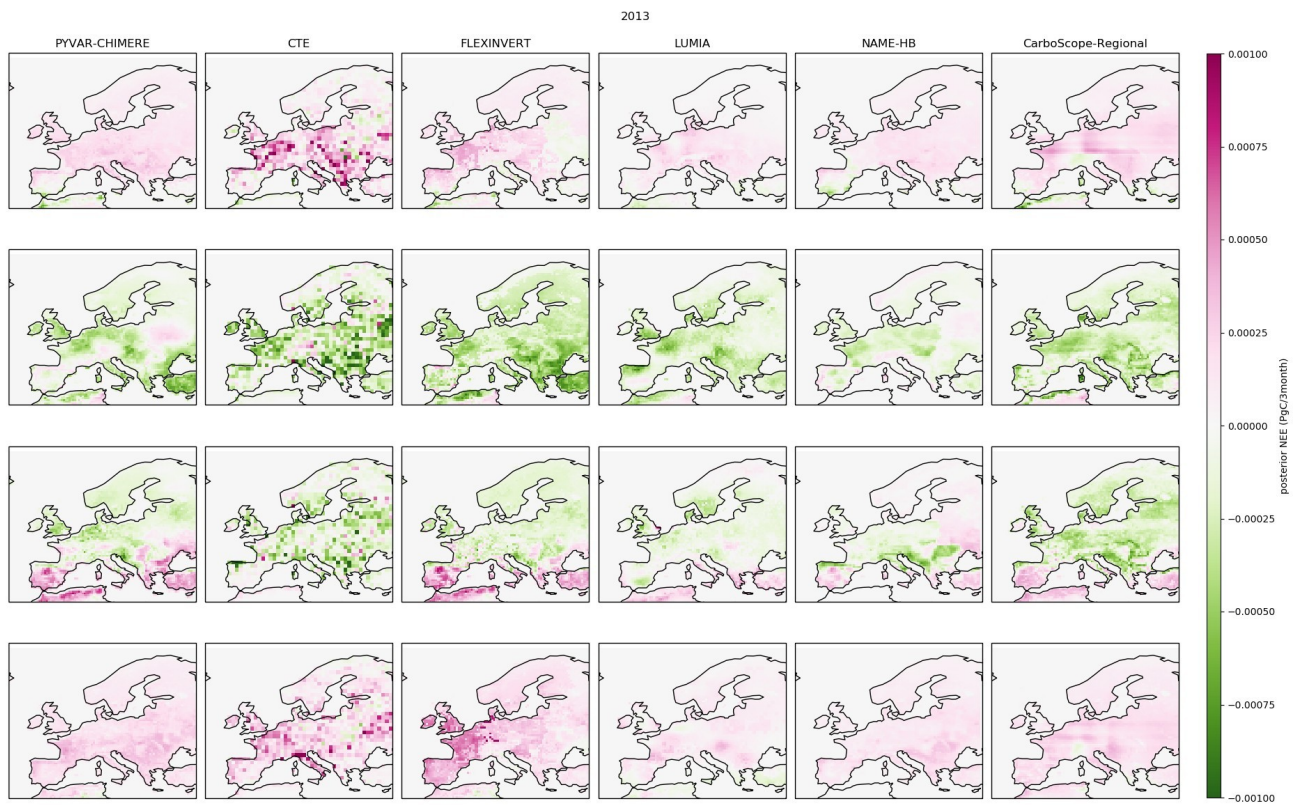


Figure S3: Posterior flux maps for the six inversions, in 3-monthly intervals (2013)

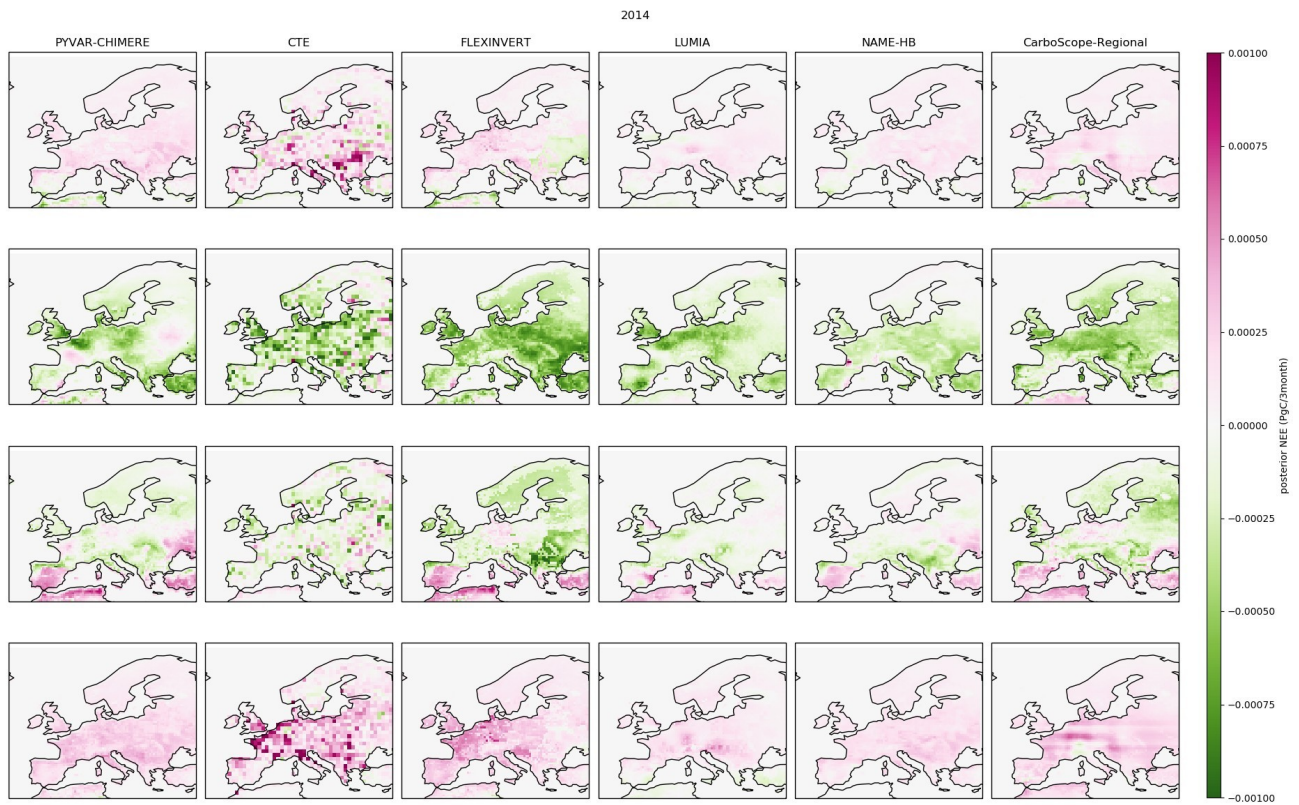


Figure S3: Posterior flux maps for the six inversions, in 3-monthly intervals (2014)

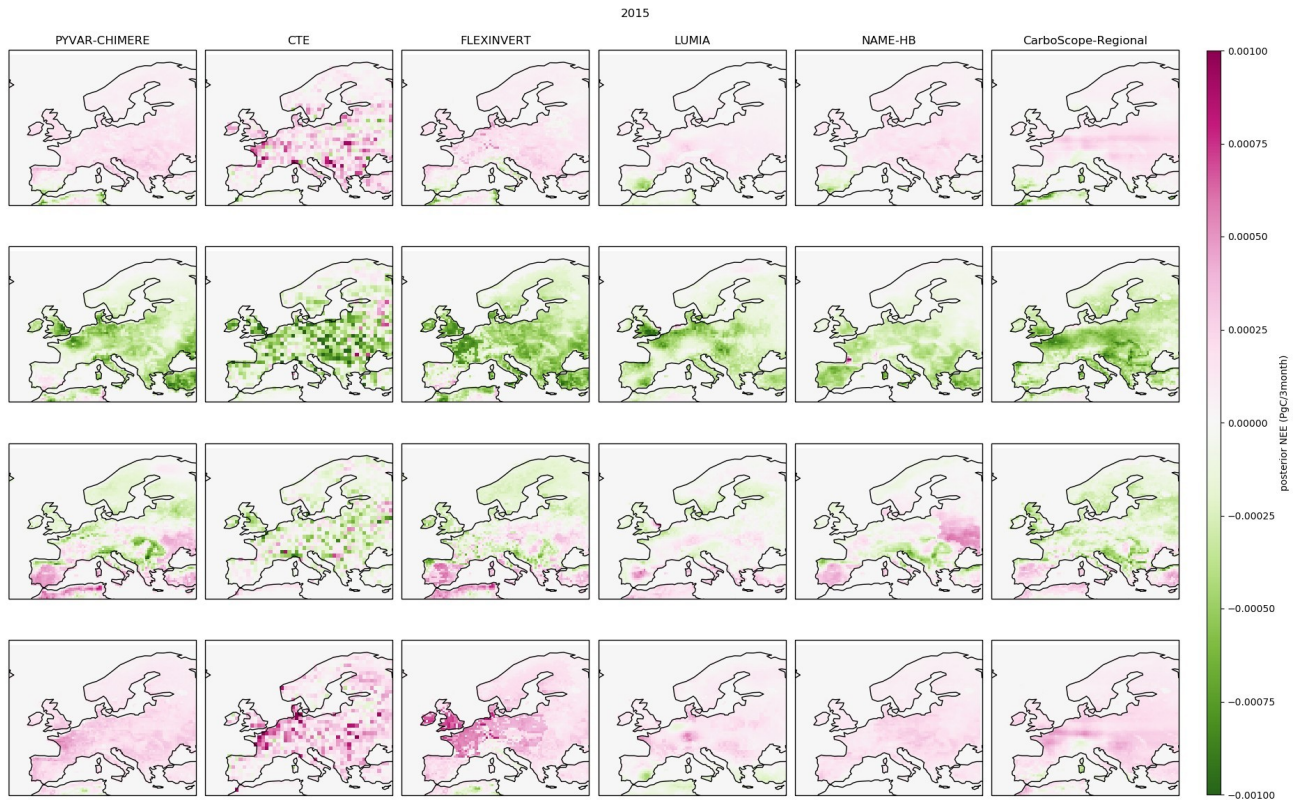


Figure S3: Posterior flux maps for the six inversions, in 3-monthly intervals (2015)

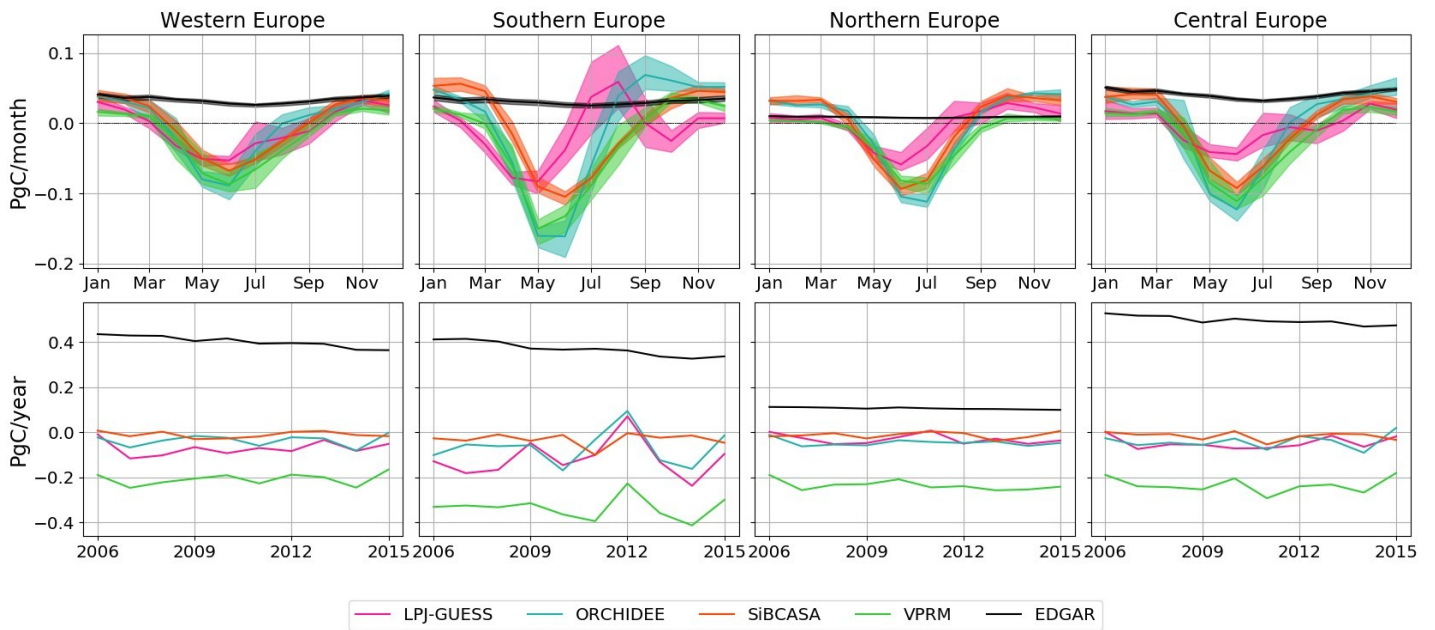


Figure S4: Regional decomposition of the prior and non-optimized fluxes shown in Figure 2 of the manuscript. The region definitions are shown on the map in Figure 1 of the main manuscript

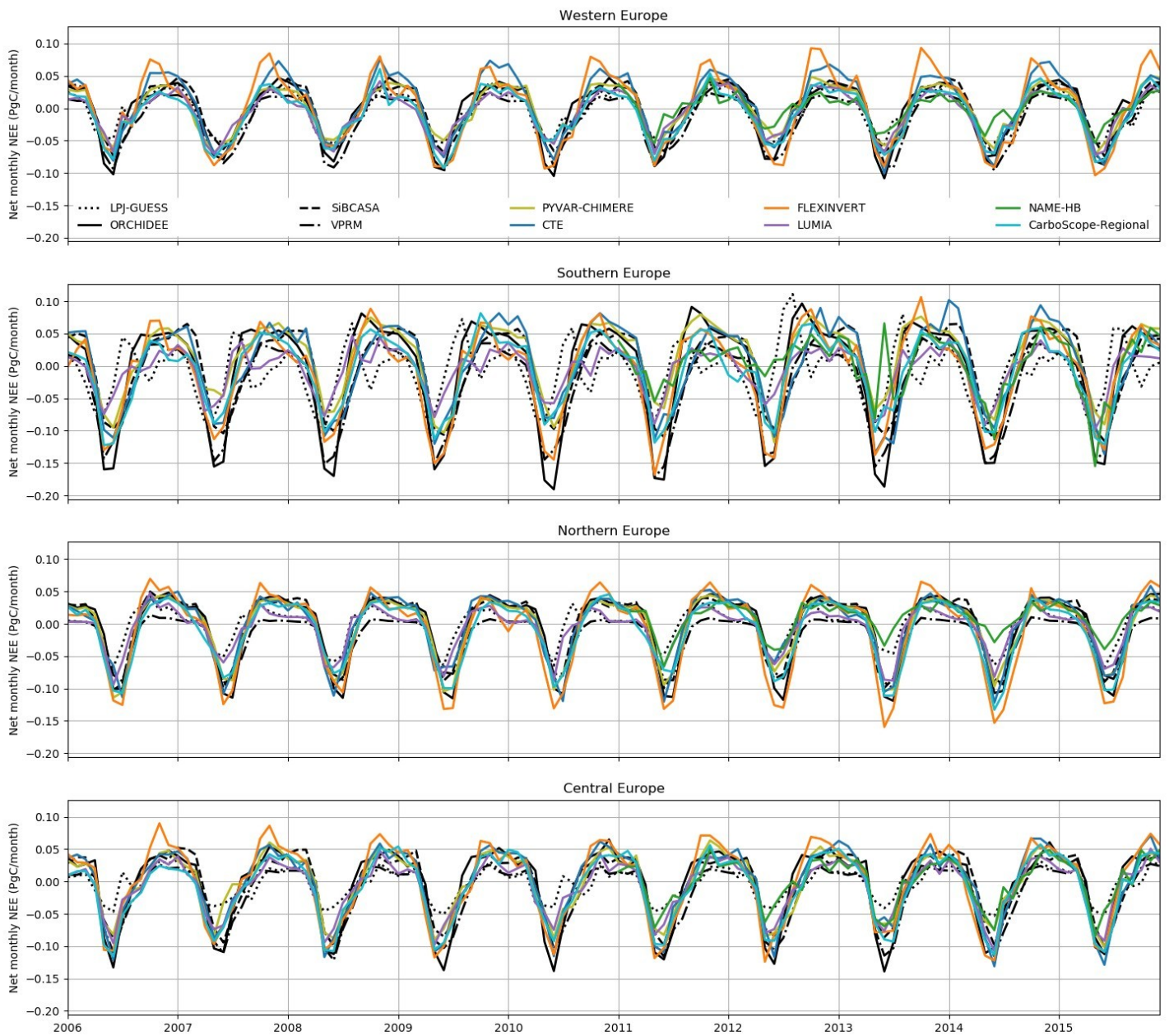


Figure S5: Monthly prior and posterior fluxes for the four regions highlighted in Figure 1 of the manuscript.